



2015, December 22
data subject to change

Product Description

Plusline Compact

Mains-voltage linear lamp giving white halogen light

Benefits

- Bright halogen light
- Long lifetime

Features

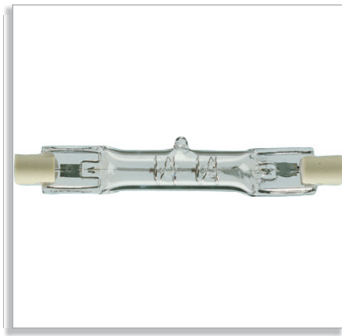
- Clear tubular quartz bulb
- Reinforced filament supports for maximum safety and shock resistance resulting in longer lifetime
- Two arc-preventing fuses for greater safety
- Excellent colour rendering
- Constant light output during life

Application

- Typically used in shop lighting applications
- Indoor: homes, offices, shops and museums
- Outdoor: billboards, car parks, security lighting and construction sites

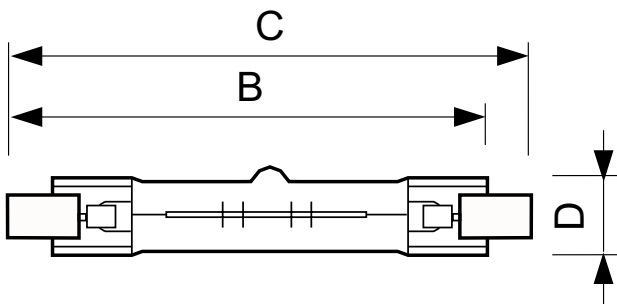
PHILIPS

Related products



R7s/10, T11/T12

Dimensional drawing



R7s/10, T11/T12

DEComp 150W R7s 240V T3 CL

Product	D	B	B	B	C
Plusline C 150W R7s 240V 1CT/10X10F	15 mm	76.5 mm	74.9 mm	73.3 mm	78.3 mm
Plusline C 150W R7s 240V 1BC/10	15 mm	76.5 mm	74.9 mm	73.3 mm	78.3 mm
Plusline C 150W R7s 240V 1BC/12	15 mm	76.5 mm	74.9 mm	73.3 mm	78.3 mm

General Information

order code	Bulb Shape	Cap-Base	Nominal Life-time (Nom)	Operating Position
80887200	T3	R7S	2000	UNIVERSAL
80891900	T3	R7S	2000	UNIVERSAL
80839100	T3	R7S	2000	UNIVERSAL

Operating and Electrical

order code	Lamp Current (Nom)	Voltage (Nom)	Power (Rated) (Nom)	Starting Time (Nom)
80887200	0.65	230	150	0.0
80891900	0.63	240	150	0.0
80839100	0.43	230	100	0.0

Light Technical

order code	Correlated Color Temperature (Nom)	Color Rendering Index (Nom)	Luminous Efficacy (rated) (Nom)	Luminous Flux (Nom)
80887200	-	100	16	2400
80891900	-	100	16	2400
80839100	2800	100	15.5	1550

Mechanical and Housing

order code	Bulb Finish
80887200	Clear (CL)
80891900	Clear (CL)
80839100	Clear (CL)

Approval and Application

order code	Energy Efficiency Label (EEL)
80887200	D
80891900	D
80839100	D

Luminaire Design Requirements

order code	Bulb Temperature (Max)
80887200	900
80891900	900
80839100	900



© 2015 Philips Lighting Holding B.V.
All rights reserved.

Specifications are subject to change without notice. Trademarks are the property of Koninklijke Philips N.V. (Royal Philips) or their respective owners.

www.philips.com/lighting

2015, December 22
data subject to change